

Elcon Corporation

2421 S 192nd Street
SeaTac, WA 98148

Tenant Lease Information

Property	Total Parcel Size	Expiration Date	Renewal Options
Lease #	Square Footage		
#001351	6,420 sq. ft.	Indefinite	Month-to-Month

Tenant General Information

Current Use:	Non-Aero Office Ground Lease
Location:	South of the Airfield (Outside the Fence)
City:	SeaTac

King County Parcel #'s

#2823049016

Elcon Corporation Building Information

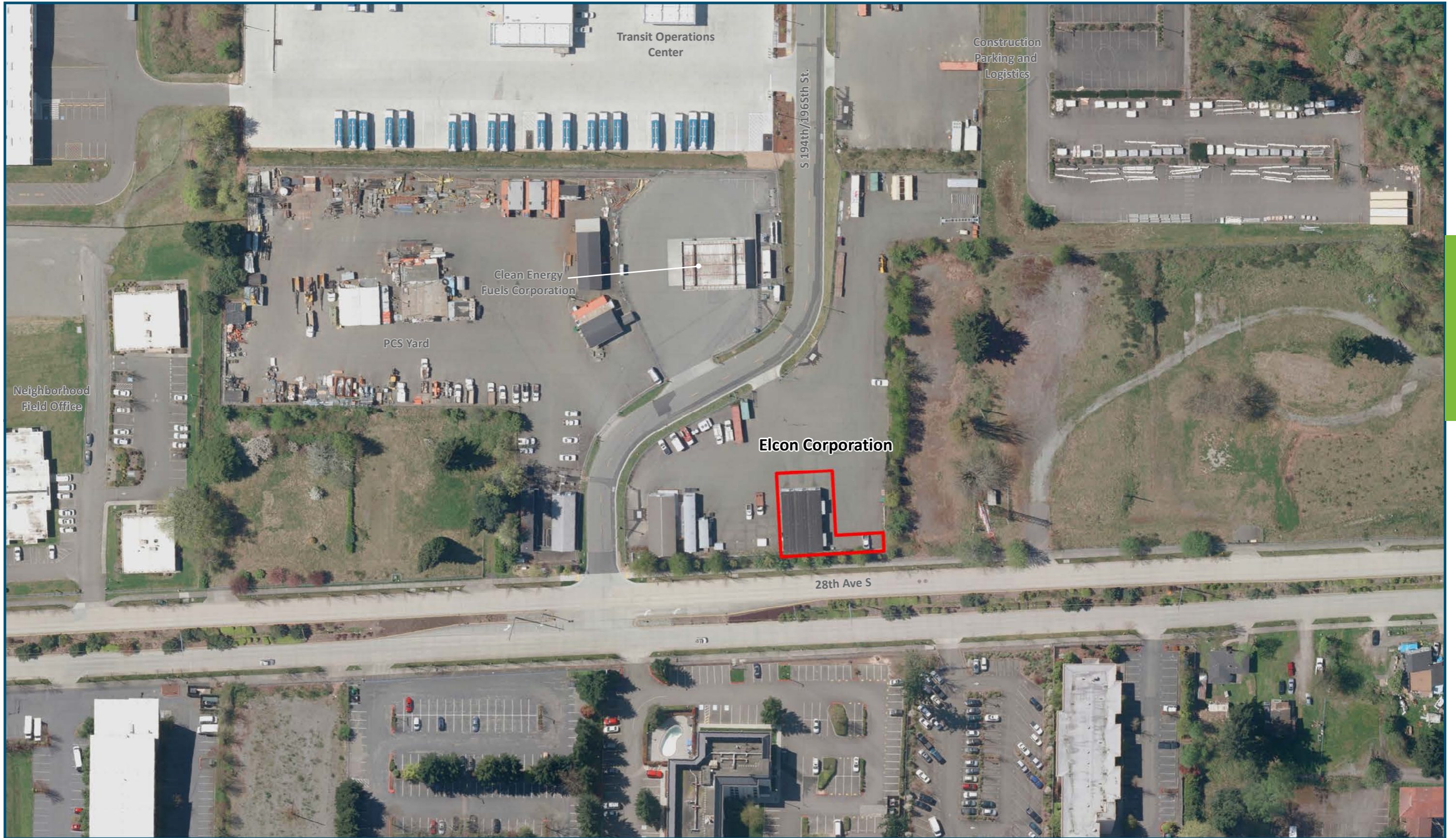
Building ID Code/ Common Name	Function	Building Owned By	Total Leased		
			Foot Print Sq. ft.	Office Sq. ft.	Whse. Sq. ft.
		Tenant			

Restrictions of Use—Based on Funding

Bonds	Airport Improvement Project Fund (AIP)
Please Call for Details	Please Call for Details

Before modifying use of property assess bonds restrictions by contacting Corporate Finance & Budget.
Access AIP's by contacting Airport Finance & Budget.



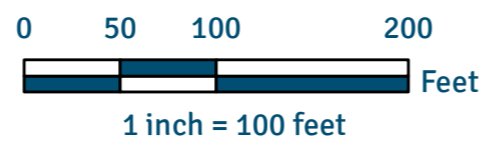


Aerial Photo Taken Spring 2012

Elcon Corporation Lease #001351

Date Published: 12-31-2014

Disclaimer: This map is for general reference only. Data Layers that appear on this map may or may not be accurate, current, or otherwise reliable. THIS MAP IS NOT TO BE USED FOR NAVIGATION.



----- Zone Matchline Boundary
----- Port of Seattle Lease Boundary